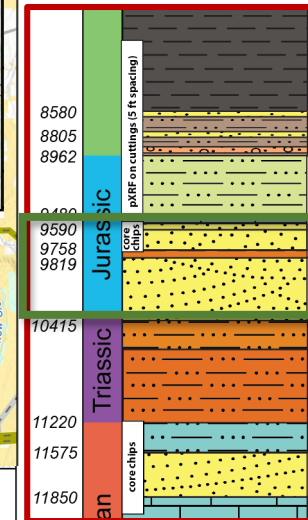
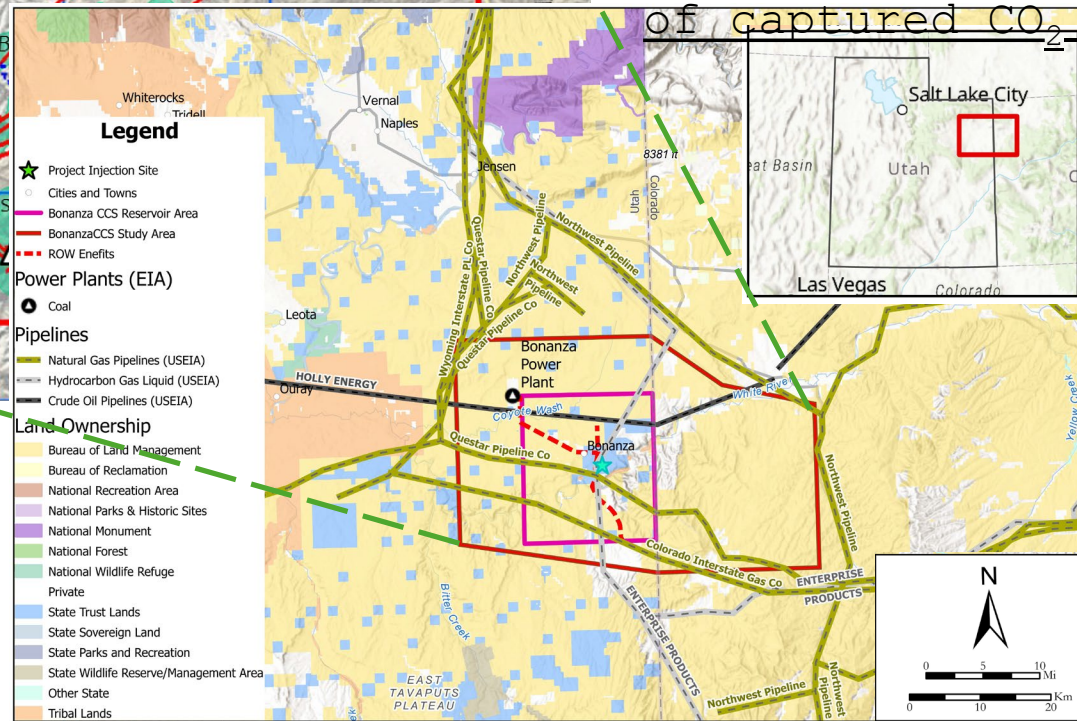
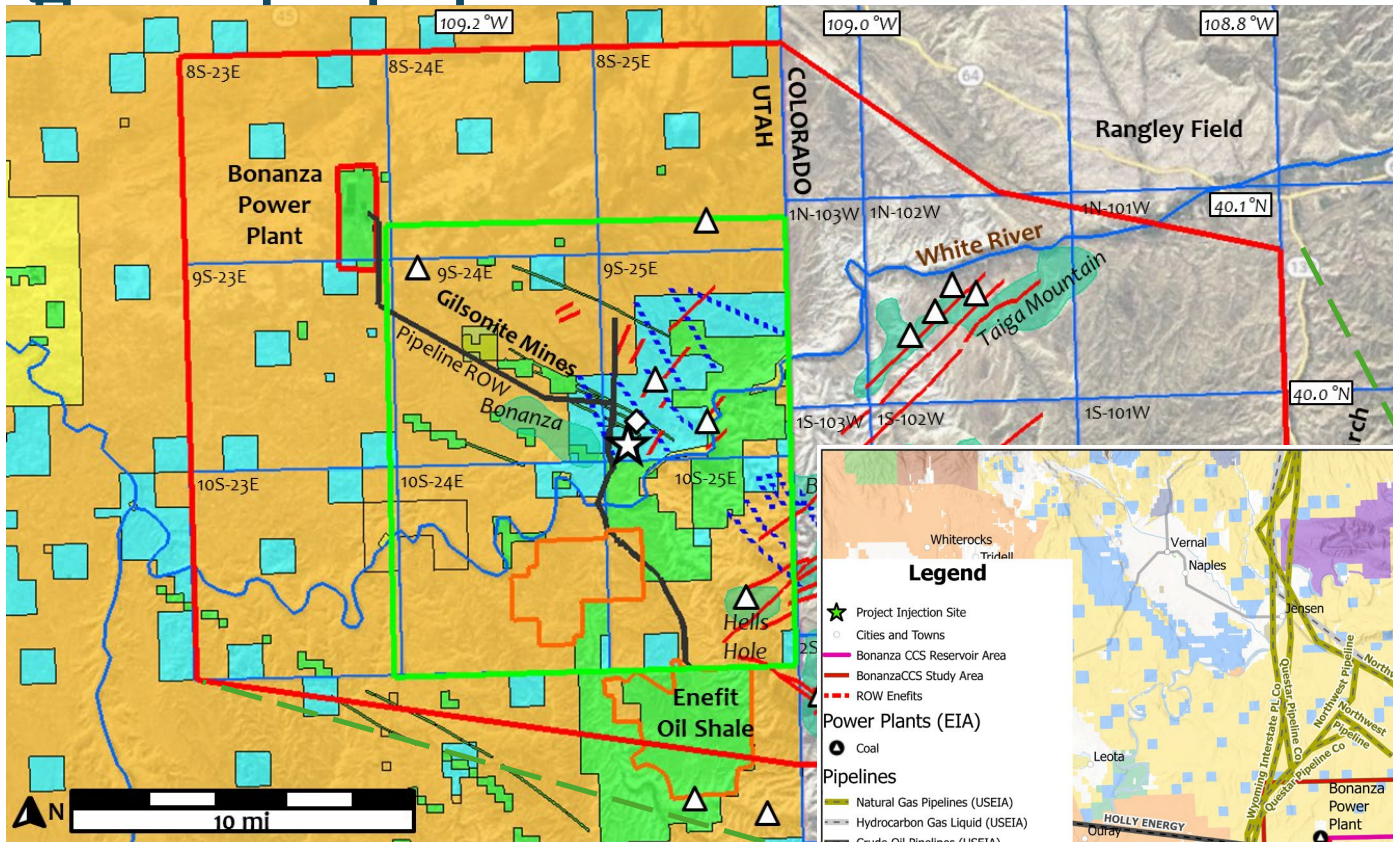


Uinta Basin CarbonSAFE II: Storage Complex

Primary Goal: to establish the technical and economic feasibility of a commercial-scale CO₂ geological storage complex in the east Uinta Basin, Utah, to securely and economically sequester 50 million metric tons of captured CO₂ over 30 years.



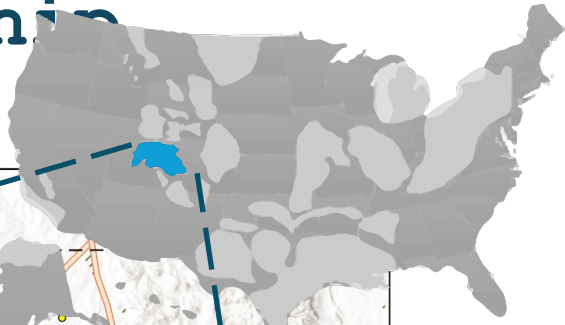
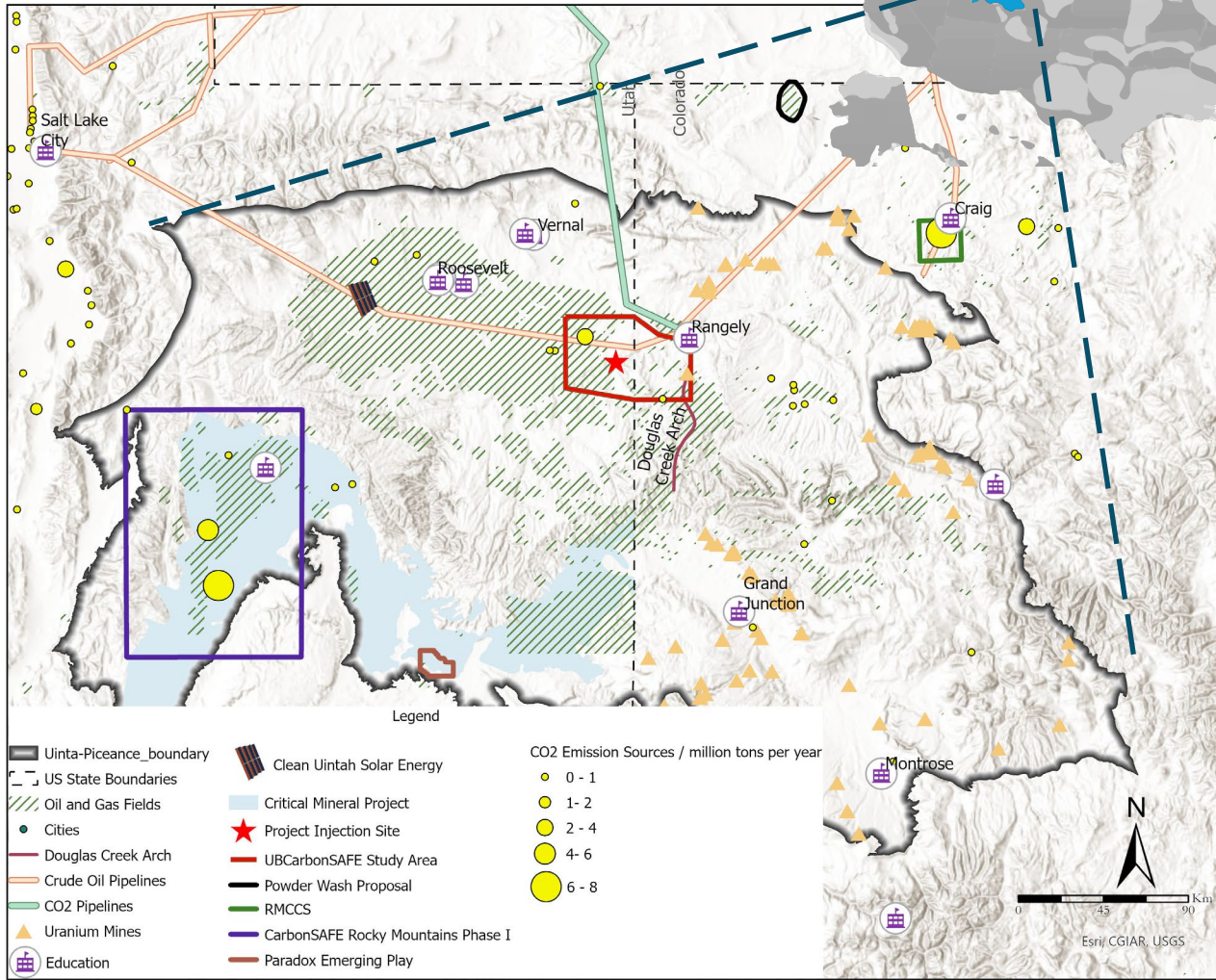
**Reservoir target:
Entrada/Nugget**

- LEGEND**
- CarbonSAFE PHASE II Study
 - Area of Study
 - Proposed Injection Site
 - CCS Storage Area
 - Proposed Stratigraphic Well
- Oil and Gas Operations**
- Oil and Gas Fields
 - Enefit Oil Shale Mines
 - Enefit Pipeline Right-Of-Way
- Utah Land Ownership**
- Tribal
 - Private
 - State (SITLA)
 - Federal
- Geological Features and Data**
- Wells with Cores / Cuttings / Logs
 - Faults
 - Legacy 2D Seismic Lines

- Legend**
- Project Injection Site
 - Cities and Towns
 - Bonanza CCS Reservoir Area
 - Bonanza CCS Study Area
 - ROW Enefits
- Power Plants (EIA)**
- Coal
- Pipelines**
- Natural Gas Pipelines (USEIA)
 - Hydrocarbon Gas Liquid (USEIA)
 - Crude Oil Pipelines (USEIA)
- Land Ownership**
- Bureau of Land Management
 - Bureau of Reclamation
 - National Recreation Area
 - National Parks & Historic Sites
 - National Monument
 - National Forest
 - National Wildlife Refuge
 - Private
 - State Trust Lands
 - State Sovereign Land
 - State Parks and Recreation
 - State Wildlife Reserve/Management Area
 - Other State
 - Tribal Lands



Uinta-Piceance Basin Carbon Management and Community Engagement Partnership



Primary Goal: to accelerate the equitable and environmentally responsible deployment of storage-based carbon management industry in the Uinta-Piceance Basin by establishing a partnership with technical, managerial, regulatory, and business expertise.

