

# Company Background

**Vision:** *Solutions for a net-zero carbon economy*

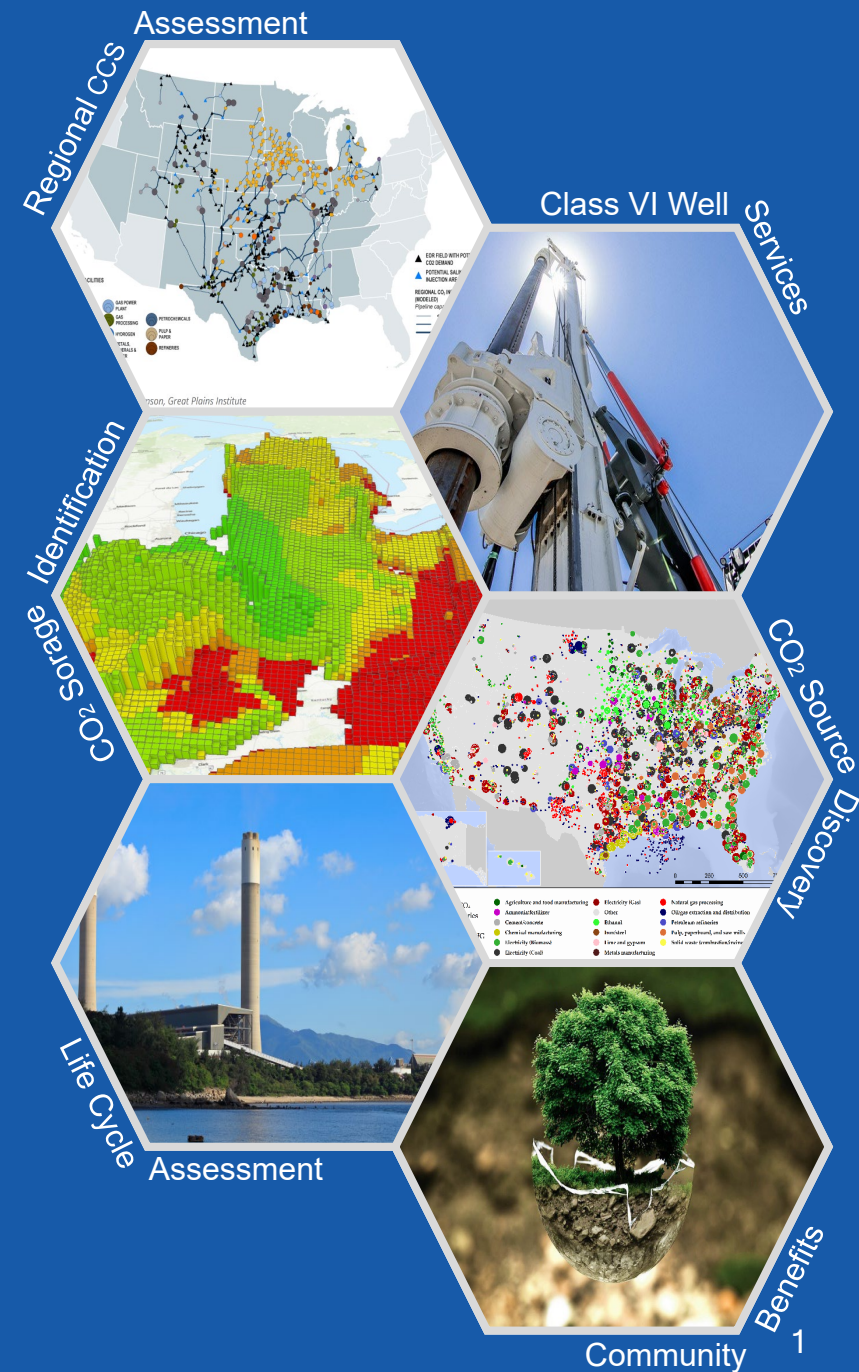
- *CARBON SOLUTIONS works with industry, government, non-profits, researchers, & other stakeholders to identify & implement real-world solutions for low-carbon energy challenges.*
- **HISTORY:** Launched 2021 | 27 employees (15 PhD's) | ~100 projects.
- **FUNDING:** 70% Government | 15% NGOs | 15% Industry.
- **FOUNDATION:** Development of *SimCCS...* and a significant role from CUSP.

## Energy applications

- CO<sub>2</sub> capture-transport-utilization-storage, hydrogen, direct air capture, geothermal, wind, energy storage, grid modeling, electric vehicles, energy equity...

## Data analytics

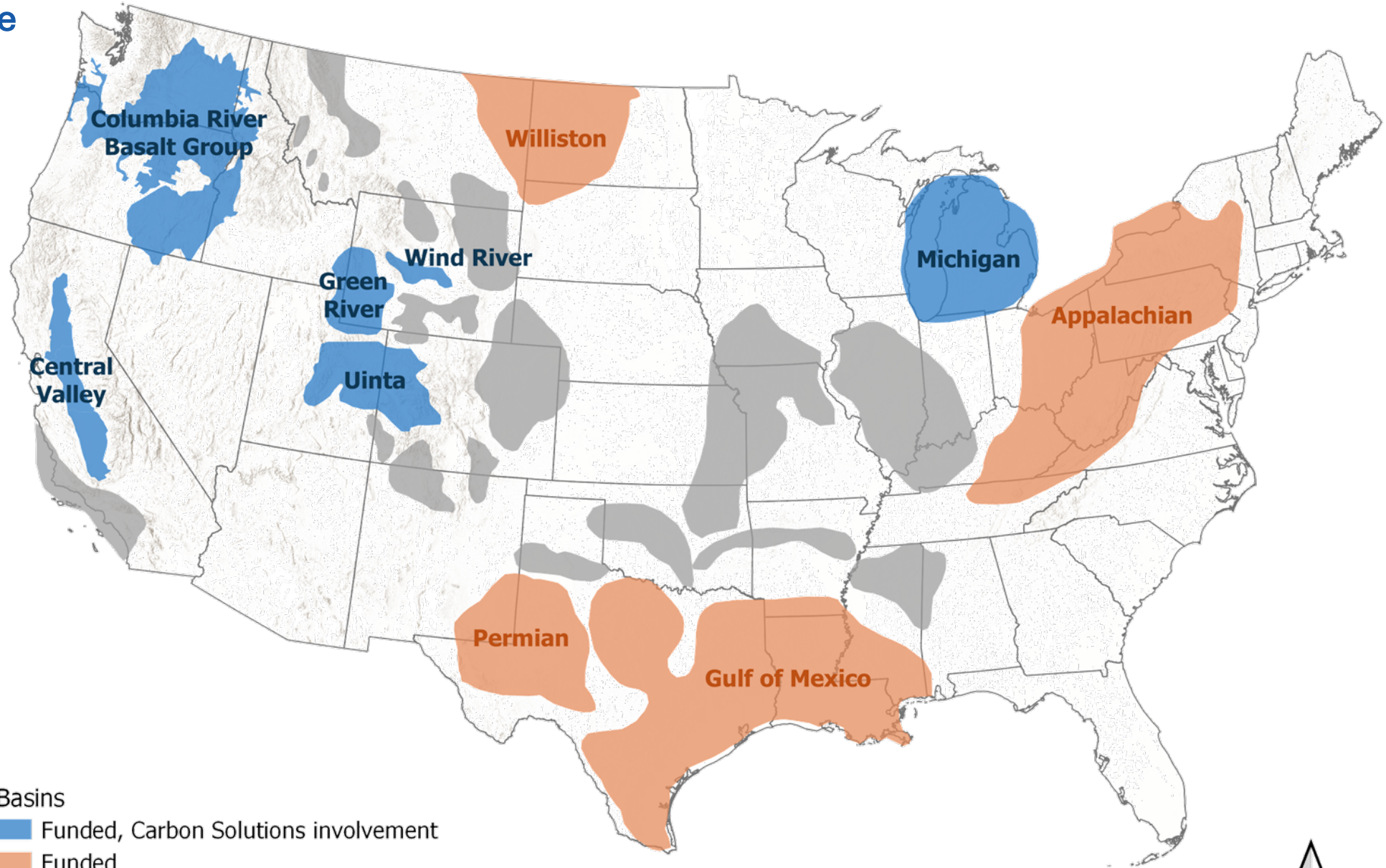
- Optimization, reservoir simulation, ML/AI, LCA, TEA, econometrics,



# CARBON SOLUTIONS and the DOE Regional Initiative for Technical Assistance Partnerships (RITAP) program

- We lead (*CaRBTAP*).
- We support (on 5 RITAPs).
- Intersection of:
  - Research, consulting, & software.
  - Academia, industry, & NGOs.

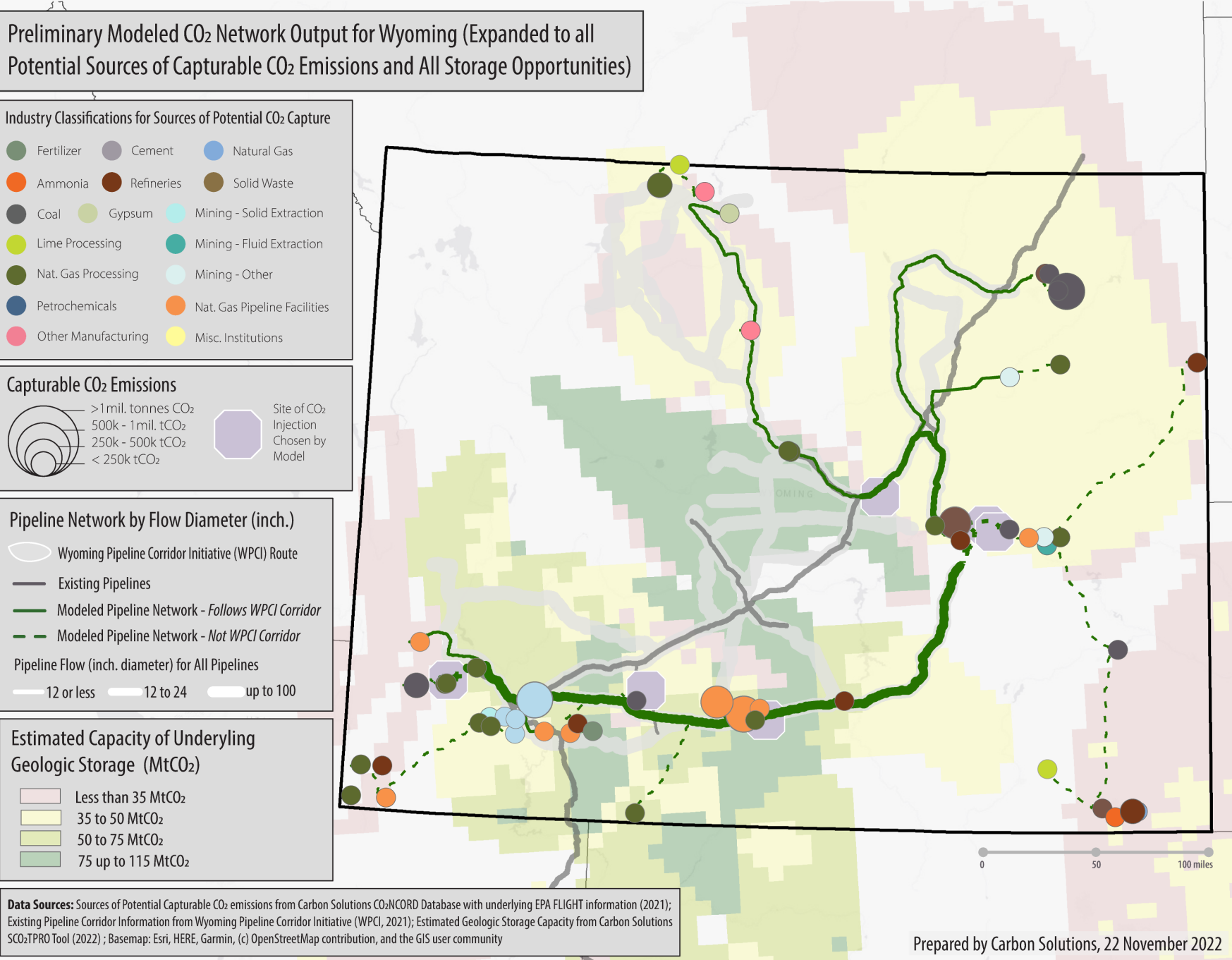
#	Basin	Prime
1	Appalachian Basin	Battelle
2	Central Valley	Stanford
3	Columbia River Basalt Group	Carbon Solutions
4	Permian Basin	Texas Tech University
5	Williston Basin	University of North Dakota
6	NW Gulf of Mexico Basin	The University of Texas at Austin
7	Uinta Basin	The University of Utah
8	Green River and Wind River Basins	University of Wyoming
9	Michigan Basin	Western Michigan University



Basins  
■ Funded, Carbon Solutions involvement  
■ Funded  
■ N/A

# CARBON SOLUTIONS and the DOE Regional Initiative to Accelerate Carbon Management Deployment

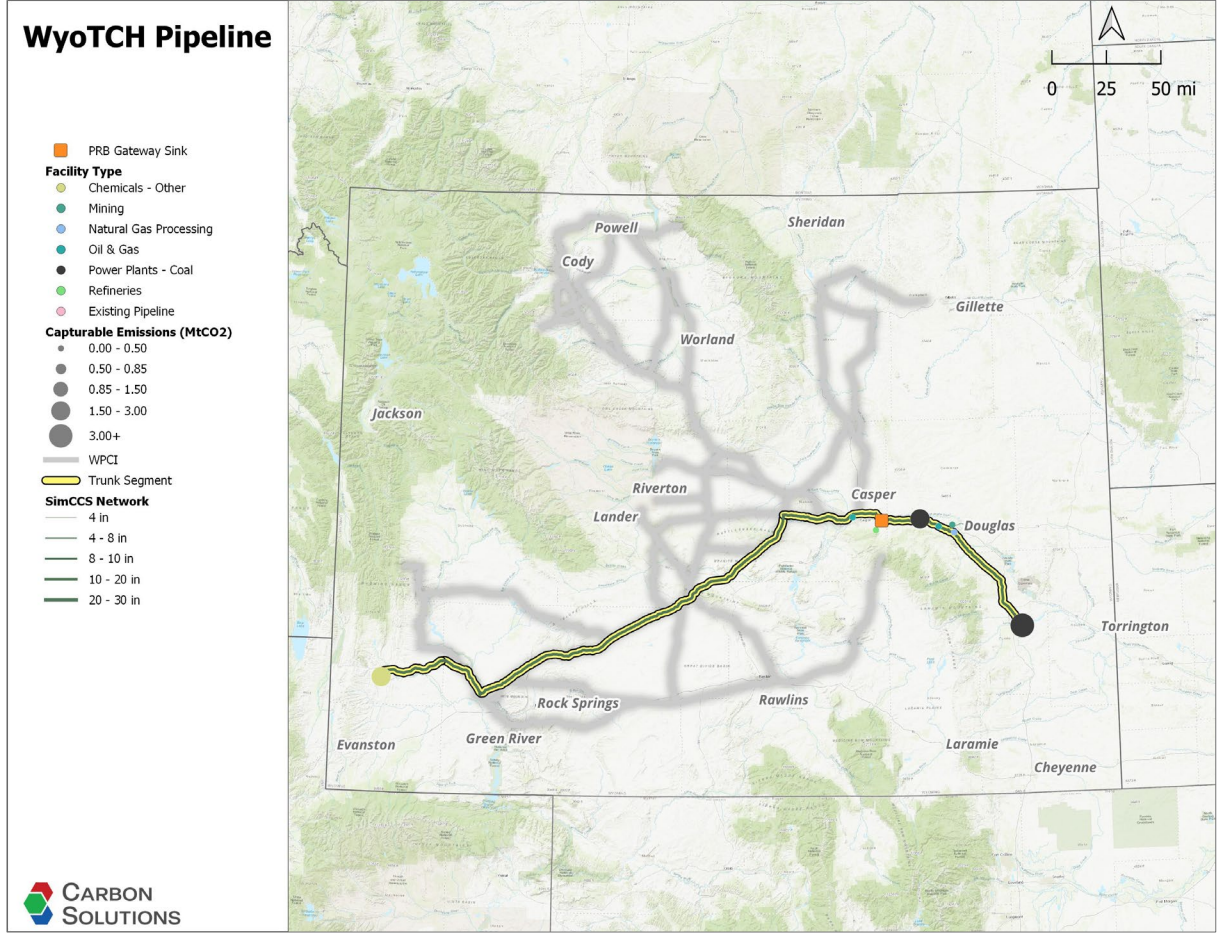
- **Wyoming Carbon Blueprint**  
<https://www.wyomingcarbonblueprint.com>
- Intersection of:
  - Research, consulting, & software.
  - Academia, industry, & NGOs.
- Pilot Tribal training program working with RECS.



# CARBON SOLUTIONS and the DOE Carbon Capture Technology Program, Front-End Engineering Design for Carbon Dioxide (CO<sub>2</sub>) Transport

## Wyoming Trails Carbon Hub (*WyoTCH*)

- Open-access CO<sub>2</sub> pipeline across Wyoming.
- First piece of a Wyoming Carbon Hub.



## Trail of the Chiefs (*TOTC*)

- Open-access CO<sub>2</sub> pipeline linking capture & storage opportunities across Montana, North Dakota, & Wyoming (and Canada!).
- Driven by native-owned businesses.

